



73 Station Road, Birmingham, B17 9LR Offers In The Region Of £420,000

Hadleigh Estate Agents are delighted to offer this modern two bedroom conversion, situated within an exclusive gated development. Being offered with no upward chain, the property is steeped in local history, this is a truly fabulous property that provides the perfect combination of modern fixtures and fittings retaining plenty of original features, with the additional benefit of two allocated parking spaces.

Offerings mews style living, the property boasts a spacious open plan kitchen, living and dining area. Two double bedrooms, master complete with en-suite, house bathroom and utility room. To the rear is a private courtyard.

Location



The Institute was a local landmark opening in 1878 the building has been sympathetically converted to create an exclusive gated development. Being within walking distance to Harborne High Street, offering an array of bars, restaurants and local supermarkets. Excellent transport links are on offer into Birmingham City Centre, nearby Queen Elizabeth Hospital and University of Birmingham. This exclusive property also sits conveniently for access to local primary schools.

Entrance Hallway



The front door leads into a welcoming and spacious hallway, giving access to both bedrooms, utility room and bathroom. Stairs lead to the first floor accommodation, with the hallway offering central heating radiator, ceiling light point, window to the front elevation and window between the two floors.

Kitchen Lounge Diner



The open plan living space offers natural light flooding the room, via four skylights complete with fitted blinds. Feature central oak truss beam set within the vaulted ceiling. A magnificent burner is at the focal point of the room with large surround and hearth, whilst the fitted kitchen offers a range of base and wall units. Double bowl sink, integrated dishwasher, gas hob and extractor over. Completing the room are two central heating radiators, ceiling fan and spotlights.

Master Bedroom



The master bedroom offers traditional features including coving, double doors leading to the courtyard and access to en-suite, along with central heating radiator and two ceiling light points.

En-suite



Modern ensuite with partially tiled walls, low level flush WC, hand wash basin and mains shower cubicle. Central heating radiator, shaving point, extractor fan and window to the side elevation.

Bedroom Two



Boasting an additional double bedroom, complete with windows to the rear elevation, coving, central heating radiator and ceiling light point. The second bedroom further benefits from having access to the 'Jack and Jill' house bathroom.

Bathroom



Modern family bathroom with fitted bath and shower over, along with glass screen. Vanity unit and

concealed tap, low level flush WC, central heating radiator, shaving point and ceiling spotlights. The house bathroom also serves as 'Jack and Jill' to the second bedroom.

Utility Room



The convenient utility room allows plumbing for washing machine, offering extra storage space.

Courtyard



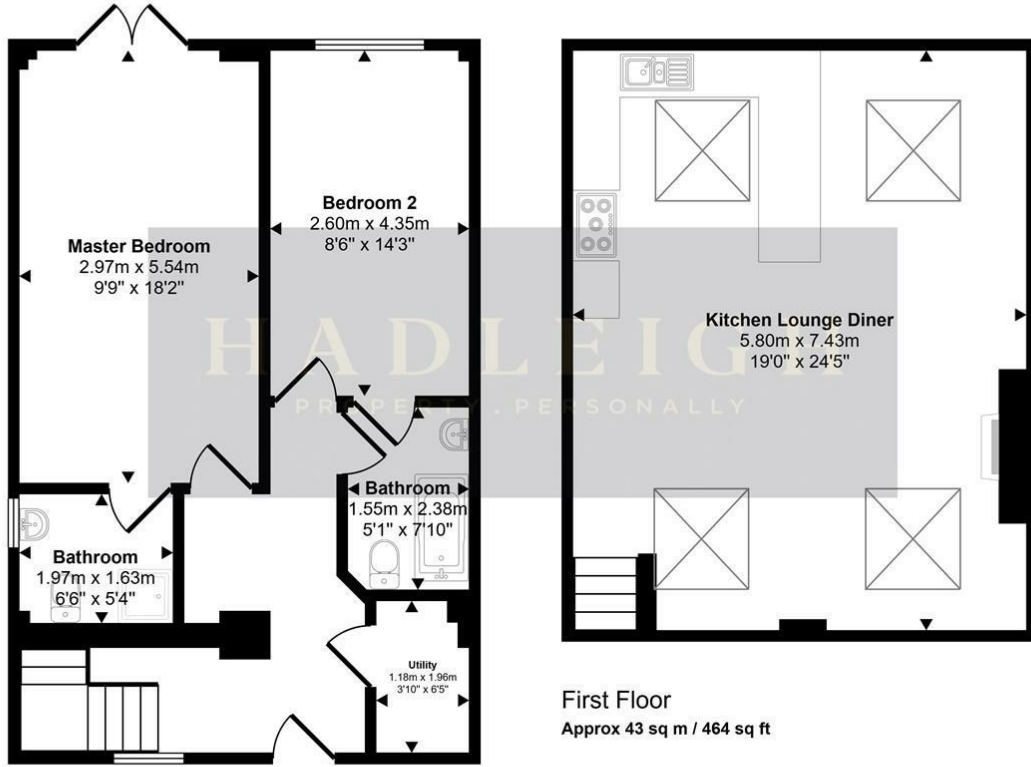
Private rear courtyard with slabbed paving and artificial lawn. Side access can also be gained.

General Information

We have been advised that the proposed service charge for 2026 is £889 per annum.

Floor Plan

Approx Gross Internal Area
95 sq m / 1019 sq ft

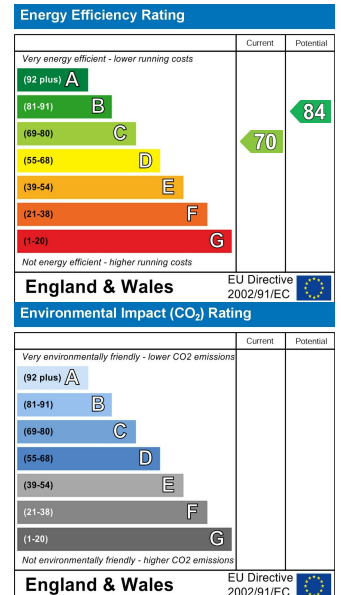


This floorplan is only for illustrative purposes and is not to scale. Measurements of rooms, doors, windows, and any items are approximate and no responsibility is taken for any error, omission or mis-statement. Icons of items such as bathroom suites are representations only and may not look like the real items. Made with Made Snappy 360.

Area Map



Energy Efficiency Graph



These particulars, whilst believed to be accurate are set out as a general outline only for guidance and do not constitute any part of an offer or contract. Intending purchasers should not rely on them as statements of representation of fact, but must satisfy themselves by inspection or otherwise as to their accuracy. No person in this firm's employment has the authority to make or give any representation or warranty in respect of the property.